



---

## Technical Information for the Main Stage



---

### Overview

Our 492 seat theater has become Grass Valley's premier venue for the performing arts. With a completely new 1,456 sq. ft. stage, newly installed sound and lighting systems, flexible seating and a 3,744 square foot dance floor, this venue is readily adaptable to musical concerts, theater and dance presentations, seminars, workshops, trade shows, exhibitions, festivals and parties.

---

### Parking

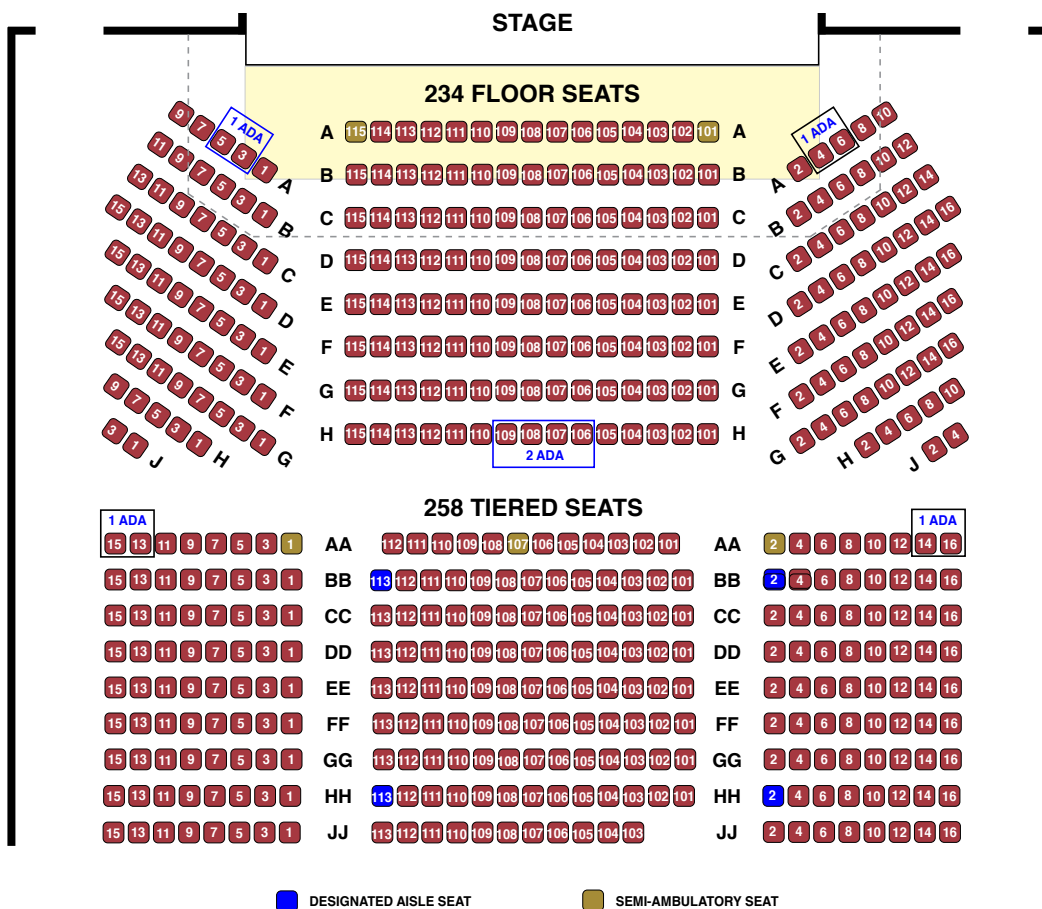
There is 3-hour metered street parking on West Main Street, free street parking on Richardson Street, and two lots—a small parking lot with 10 spaces (including two ADA spaces) for staff and production vehicles immediately adjacent to the stage entrance and loading door, and a larger 20-space parking lot that can also accommodate motorcycles and bicycles. Each parking lot has it's own access to Richardson Street. A shuttle system affords patrons additional parking at a nearby lot on Main Street.

Tour buses may unload in the lower lot, but must park either in the upper lot or on the street. Shore power is available in the upper lot.

## Seating

Seating consists of 234 removable seats on the floor and 258 non-removable retractable seats on a tiered platform. The combined total maximum capacity is 492 seats. The floor seating can be arranged in various combinations, including partial or full cabaret seating with tables or limited seating with an open dance floor.

### SEATING PLAN CAPACITY: 492



[Print Main Stage Seating Plan as PDF](#)

## ADA

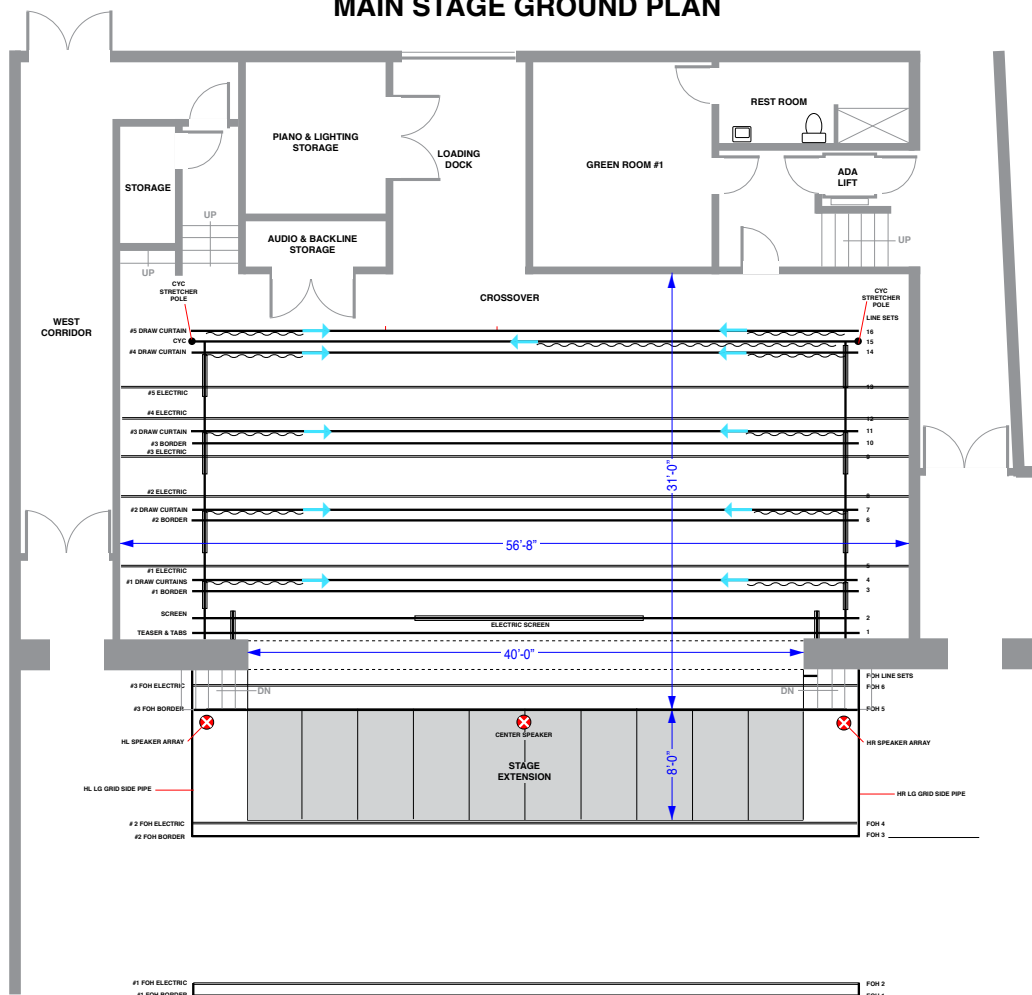
There is permanent wheelchair access to the auditorium and public areas at both the front and rear of the building, and a wheelchair lift that provides ADA access to the stage. The lower parking lot contains two ADA compliant parking spaces, and all of the public spaces inside the building are ADA accessible.

## Stage Area and Dimensions

Access to the stage is via stairs up left and up right, as well as through the rear loading door. Two removable five-step units can be placed at the sides of the apron for house access.

Proscenium:	12' high x 40' wide
Floor surface:	Masonite painted black
Stage height:	3'-2 1/2"
Stage width:	56'-8"
Stage depth:	31'
Playing area:	25' x 32'-40' (adjustable width)
SR wing:	9' x 26'
SL wing:	7' x 26'

**MAIN STAGE GROUND PLAN**



[Print Main Stage Plan as PDF](#)

---

## Lighting

### Control

House and stage lighting are controlled from the tech gallery at the top of the retractable seating platform. There is no enclosed control booth. The distance from the front of the stage to the lighting and sound consoles and follow spot position is 64 feet.

### Connectors

All stage lighting connectors are Edison.

### Electrics

All electrics are dead hung.

### Console

ETC Element 2

### Distribution

Control lines are DMX, with extra DMX drops available.

### Equipment

All instrumentation is LED, including one follow spot in the Tech Gallery

### Access for focusing

Two Genie vertical mast lifts---one for on stage and one for FOH lighting.

### House plot

The standard lighting plot consists of the following elements:

#### Front light

Ten areas plus another five areas for the apron extension if used, and full stage color washes.

#### Side light

Four sets of near and far high side positions for both directions with full stage coverage.

#### Back light

Ten areas plus another five areas for the apron extension if used, with full stage coverage.

#### Specials

Five FOH leko front specials.

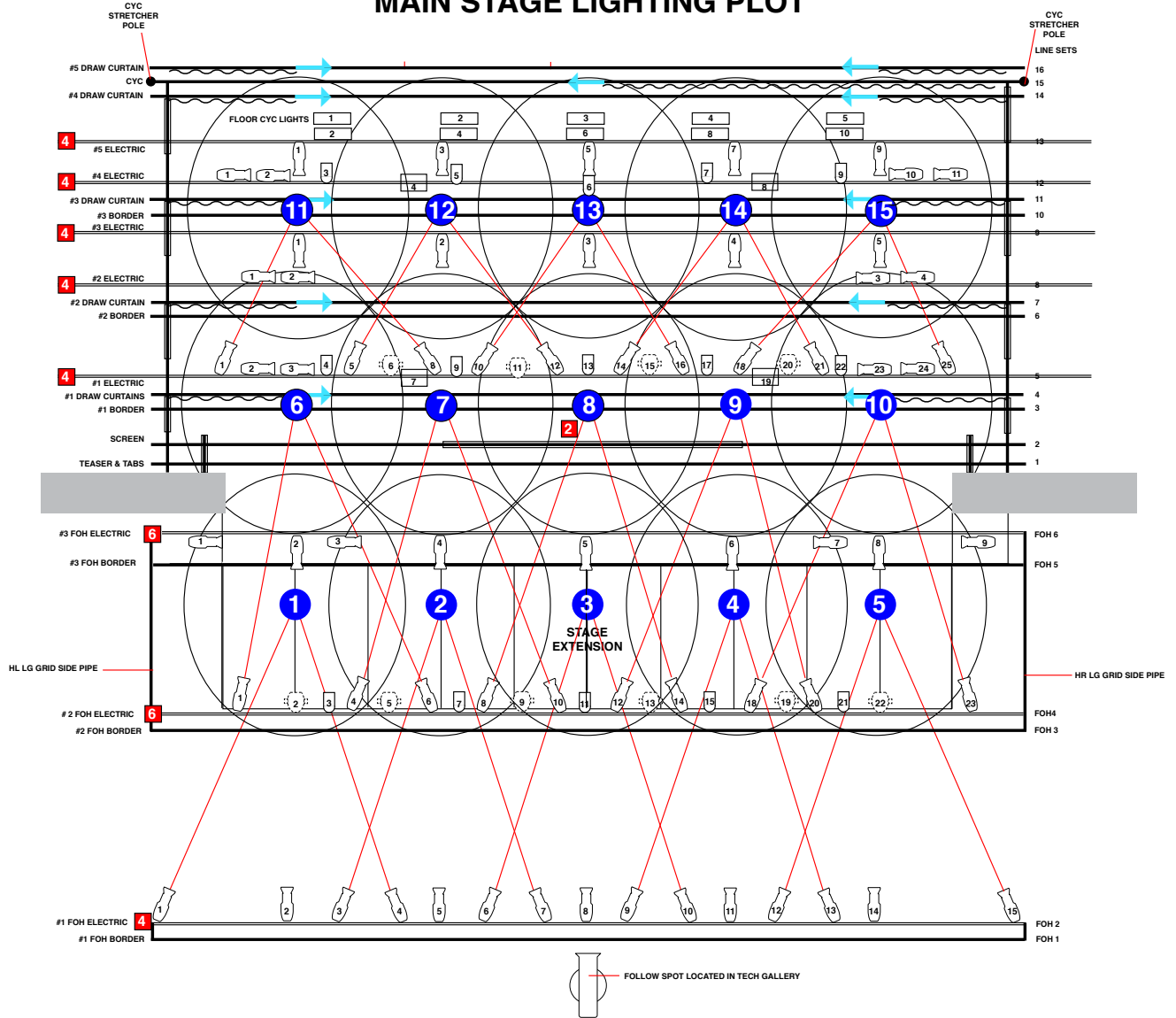
#### Cyc

Color washes from both top and bottom.

### Hazers and Strobes

We can provide two Chauvet Hurricane 2D hazer machines. Strobes are allowed, as long as proper signage is posted in the lobby.

# MAIN STAGE LIGHTING PLOT



[Print Main Stage Lighting Plot as PDF](#)

# MAIN STAGE LIGHTING INSTRUMENT SCHEDULE

Position	#	Address	Channel	Type	Model	Color	Lens	Power	Function
#1 FOH	1	1/101	41	ColorSource Spot	CSSPOTS-0	RGB-L	50 degree	247w	Area 1 R front
#1 FOH	2	1/106	96	ColorSource Spot	CSSPOTS-0	RGB-L	36 degree	247w	Right Special
#1 FOH	3	1/111	42	ColorSource Spot	CSSPOTS-0	RGB-L	50 degree	247w	Area 2 R front
#1 FOH	4	1/116	46	ColorSource Spot	CSSPOTS-0	RGB-L	50 degree	247w	Area 1 L front
#1 FOH	5	1/121	97	ColorSource Spot	CSSPOTS-0	RGB-L	36 degree	247w	Right center special
#1 FOH	6	1/126	43	ColorSource Spot	CSSPOTS-0	RGB-L	50 degree	247w	Area 3 R front
#1 FOH	7	1/131	47	ColorSource Spot	CSSPOTS-0	RGB-L	50 degree	247w	Area 2 L front
#1 FOH	8	1/136	98	ColorSource Spot	CSSPOTS-0	RGB-L	50 degree	247w	Center special
#1 FOH	9	1/141	44	ColorSource Spot	CSSPOTS-0	RGB-L	50 degree	247w	Area 4 R front
#1 FOH	10	1/146	48	ColorSource Spot	CSSPOTS-0	RGB-L	50 degree	247w	Area 3 L front
#1 FOH	11	1/151	99	ColorSource Spot	CSSPOTS-0	RGB-L	36 degree	247w	Left center special
#1 FOH	12	1/156	45	ColorSource Spot	CSSPOTS-0	RGB-L	50 degree	247w	Area 5 R front
#1 FOH	13	1/161	49	ColorSource Spot	CSSPOTS-0	RGB-L	50 degree	247w	Area 4 L front
#1 FOH	14	1/166	100	ColorSource Spot	CSSPOTS-0	RGB-L	36 degree	247w	Left special
#1 FOH	15	1/171	50	ColorSource Spot	CSSPOTS-0	RGB-L	50 degree	247w	Area 5 L front
#2 FOH	1	1/176	21	ColorSource Spot	CSSPOTS-0	RGB-L	50 degree	247w	Area 6 R front
#2 FOH	2	1/177	N/A	Mover	N/A	N/A	N/A	650w	Moving special
#2 FOH	3	1/181	51	ColorSource Par	CSPAR	Normal	SELRW-7.5	90w	Area 1 top
#2 FOH	4	1/186	22	ColorSource Spot	CSSPOTS-0	RGB-L	50 degree	247w	Area 7 R front
#2 FOH	5	1/187	N/A	Mover	N/A	N/A	N/A	650w	Moving special
#2 FOH	6	1/191	26	ColorSource Spot	CSSPOTS-0	RGB-L	50 degree	247w	Area 6 L front
#2 FOH	7	1/198	52	ColorSource Par	CSPAR	Normal	SELRW-7.5	90w	Area 2 top
#2 FOH	8	1/201	23	ColorSource Spot	CSSPOTS-0	RGB-L	50 degree	247w	Area 8 R front
#2 FOH	9	1/202	N/A	Mover	N/A	N/A	N/A	650w	Moving special
#2 FOH	10	1/206	27	ColorSource Spot	CSSPOTS-0	RGB-L	50 degree	247w	Area 7 L front
#2 FOH	11	1/211	53	ColorSource Par	CSPAR	Normal	SELRW-7.5	90w	Area 3 top
#2 FOH	12	1/216	24	ColorSource Spot	CSSPOTS-0	RGB-L	50 degree	247w	Area 9 R front
#2 FOH	13	1/217	N/A	Mover	N/A	N/A	N/A	650w	Moving special
#2 FOH	14	1/221	28	ColorSource Spot	CSSPOTS-0	RGB-L	50 degree	247w	Area 8 L front
#2 FOH	15	1/226	54	ColorSource Par	CSPAR	Normal	SELRW-7.5	90w	Area 4 top
#2 FOH	16	1/231	25	ColorSource Spot	CSSPOTS-0	RGB-L	50 degree	247w	Area 10 R front
#2 FOH	17	1/232	N/A	Mover	N/A	N/A	N/A	650w	Moving special
#2 FOH	18	1/236	29	ColorSource Spot	CSSPOTS-0	RGB-L	50 degree	247w	Area 9 L front
#2 FOH	19	1/241	55	ColorSource Par	CSPAR	Normal	SELRW-7.5	90w	Area 5 top
#2 FOH	20	1/242	N/A	Mover	N/A	N/A	N/A	650w	Moving special
#2 FOH	21	1/246	30	ColorSource Spot	CSSPOTS-0	RGB-L	50 degree	247w	Area 10 L front
#3 FOH	1	1/251	73	ColorSource Spot	CSSPOTS-0	Deep Blue	36 degree	247w	DS R side near
#3 FOH	2	1/256	56	ColorSource Spot	CSSPOTS-0	Deep Blue	36 degree	247w	Area 1 back
#3 FOH	3	1/261	74	ColorSource Spot	CSSPOTS-0	Deep Blue	36 degree	247w	DS R side far
#3 FOH	4	1/266	57	ColorSource Spot	CSSPOTS-0	Deep Blue	36 degree	247w	Area 2 back
#3 FOH	5	1/271	58	ColorSource Spot	CSSPOTS-0	Deep Blue	36 degree	247w	Area 3 back
#3 FOH	6	1/276	59	ColorSource Spot	CSSPOTS-0	Deep Blue	36 degree	247w	Area 4 back
#3 FOH	7	1/281	76	ColorSource Spot	CSSPOTS-0	Deep Blue	36 degree	247w	DS L side far
#3 FOH	8	1/286	60	ColorSource Spot	CSSPOTS-0	Deep Blue	36 degree	247w	Area 5 back
#3 FOH	9	1/291	71	ColorSource Spot	CSSPOTS-0	Deep Blue	36 degree	247w	DS L side near
#1 Electric	1	2/1	1	ColorSource Spot	CSSPOTS-0	RGB-L	36 degree	247w	Area 11 R front
#1 Electric	2	2/6	69	ColorSource Spot	CSSPOTS-0	Deep Blue	36 degree	247w	DC R side near
#1 Electric	3	2/11	70	ColorSource Spot	CSSPOTS-0	Blue	36 degree	247w	DC R side far
#1 Electric	4	2/16	31	ColorSource Par	CSPAR	Normal	SELRW-7.5	90w	Area 6 top
#1 Electric	5	2/21	2	ColorSource Spot	CSSPOTS-0	RGB-L	36 degree	247w	Area 12 R front
#1 Electric	6	2/22	N/A	Mover	N/A	N/A	N/A	650w	Moving special
#1 Electric	7	—	—	—	—	—	—	—	Stage work light
#1 Electric	8	2/26	6	ColorSource Spot	CSSPOTS-0	RGB-L	26 degree	247w	Area 11 L front
#1 Electric	9	2/31	32	ColorSource Par	CSPAR	Normal	SELRW-7.5	90w	Area 7 top
#1 Electric	10	2/36	3	ColorSource Spot	CSSPOTS-0	RGB-L	26 degree	247w	Area 13 R front
#1 Electric	11	2/37	N/A	Mover	N/A	N/A	N/A	650w	Moving special
#1 Electric	12	2/41	7	ColorSource Spot	CSSPOTS-0	RGB-L	36 degree	247w	Area 12 L front
#1 Electric	13	2/46	33	ColorSource Par	CSPAR	Normal	SELRW-7.5	90w	Area 8 top
#1 Electric	14	2/51	4	ColorSource Spot	CSSPOTS-0	RGB-L	36 degree	247w	Area 14 R front
#1 Electric	15	2/52	N/A	Mover	N/A	N/A	N/A	650w	Moving special
#1 Electric	16	2/56	8	ColorSource Spot	CSSPOTS-0	RGB-L	36 degree	247w	Area 13 L front
#1 Electric	17	2/61	34	ColorSource Par	CSPAR	Normal	SELRW-7.5	90w	Area 9 top
#1 Electric	18	2/66	5	ColorSource Spot	CSSPOTS-0	RGB-L	36 degree	247w	Area 15 R front
#1 Electric	19	—	—	—	—	—	—	—	Stage work light
#1 Electric	20	2/67	N/A	Mover	N/A	N/A	N/A	650w	Moving special
#1 Electric	21	2/71	9	ColorSource Spot	CSSPOTS-0	RGB-L	36 degree	247w	Area 14 L front
#1 Electric	22	2/76	35	ColorSource Par	CSPAR	Normal	SELRW-7.5	90w	Area 10 top
#1 Electric	23	2/81	72	ColorSource Spot	CSSPOTS-0	Deep Blue	36 degree	247w	DC L side far
#1 Electric	24	2/86	71	ColorSource Spot	CSSPOTS-0	Deep Blue	36 degree	247w	DC L side near
#1 Electric	25	2/91	10	ColorSource Spot	CSSPOTS-0	RGB-L	36 degree	247w	Area 15 L front
#2 Electric	1	2/96	65	ColorSource Spot	CSSPOTS-0	Deep Blue	36 degree	247w	UC R side near
#2 Electric	2	2/101	66	ColorSource Spot	CSSPOTS-0	Deep Blue	36 degree	247w	UC R side far
#2 Electric	3	2/131	68	ColorSource Spot	CSSPOTS-0	Deep Blue	36 degree	247w	UC L side far
#2 Electric	4	2/136	67	ColorSource Spot	CSSPOTS-0	Deep Blue	36 degree	247w	UC L side near
#3 Electric	1	3/1	36	ColorSource Spot	CSSPOTS-0	Deep Blue	36 degree	247w	Area 6 back
#3 Electric	2	3/6	37	ColorSource Spot	CSSPOTS-0	Deep Blue	36 degree	247w	Area 7 back
#3 Electric	3	3/11	38	ColorSource Spot	CSSPOTS-0	Deep Blue	36 degree	247w	Area 8 back
#3 Electric	4	3/16	39	ColorSource Spot	CSSPOTS-0	Deep Blue	36 degree	247w	Area 9 back
#3 Electric	5	3/21	40	ColorSource Spot	CSSPOTS-0	Deep Blue	36 degree	247w	Area 10 back

Position	#	Address	Channel	Type	Model	Color	Lens	Power	Function
#4 Electric	1	3/26	61	ColorSource Spot	CSSPOTS-0	Deep Blue	36 degree	247w	US R side near
#4 Electric	2	3/31	62	ColorSource Spot	CSSPOTS-0	Deep Blue	36 degree	247w	US R side far
#4 Electric	3	2/106	11	ColorSource Par	CSPAR	Normal	SELRW-7.5	90w	Area 11 top
#4 Electric	4								Stage work light
#4 Electric	5	2/111	12	ColorSource Par	CSPAR	Normal	SELRW-7.5	90w	Area 12 top
#4 Electric	6	2/116	13	ColorSource Par	CSPAR	Normal	SELRW-7.5	90w	Area 13 top
#4 Electric	7	2/121	14	ColorSource Par	CSPAR	Normal	SELRW-7.5	90w	Area 14 top
#4 Electric	8								Stage wWork light
#4 Electric	9	2/126	15	ColorSource Par	CSPAR	Normal	SELRW-7.5	90w	Area 15 top
#4 Electric	10	3/41	64	ColorSource Spot	CSSPOTS-0	Deep Blue	36 degree	247w	US L side far
#4 Electric	11	3/36	63	ColorSource Spot	CSSPOTS-0	Deep Blue	36 degree	247w	US L side near
#5 Electric	1	3/101	16	ColorSource Spot	CSSPOTS-0	Deep Blue	36 degree	247w	Area 11 back
#5 Electric	2	3/201	81	Spectracyc 200	SSCYC200	RGBA	N/A	200w	R top cyc
#5 Electric	3	3/106	17	ColorSource Spot	CSSPOTS-0	Deep Blue	36 degree	247w	Area 12 back
#5 Electric	4	3/209	82	Spectracyc 200	SSCYC200	RGBA	N/A	200w	RC top cyc
#5 Electric	5	3/111	18	ColorSource Spot	CSSPOTS-0	Deep Blue	36 degree	247w	Area 13 back
#5 Electric	6	3/217	83	Spectracyc 200	SSCYC200	RGBA	N/A	200w	C top cyc
#5 Electric	7	3/116	19	ColorSource Spot	CSSPOTS-0	Deep Blue	36 degree	247w	Area 14 back
#5 Electric	8	3/225	84	Spectracyc 200	SSCYC200	RGBA	N/A	200w	LC top cyc
#5 Electric	9	3/121	20	ColorSource Spot	CSSPOTS-0	Deep Blue	36 degree	247w	Area 15 back
#5 Electric	10	3/233	85	Spectracyc 200	SSCYC200	RGBA	N/A	200w	L top cyc
US Floor	1	3/241	86	Spectracyc 200	SSCYC200	RGBA	N/A	200w	R bottom cyc
US Floor	2	3/249	87	Spectracyc 200	SSCYC200	RGBA	N/A	200w	RC bottom cyc
US Floor	3	3/257	88	Spectracyc 200	SSCYC200	RGBA	N/A	200w	C bottom cyc
US Floor	4	3/265	89	Spectracyc 200	SSCYC200	RGBA	N/A	200w	LC bottom cyc
US Floor	5	3/273	90	Spectracyc 200	SSCYC200	RGBA	N/A	200w	L bottom cyc
House	1			Lycian ZOT LED	N/A	N/A	N/A	350w	Follow spot

[Print Main Stage Lighting Instrument Schedule as PDF](#)

## Loading

Primary loading access is via the lower lot on Richardson Street, either by using a portable ramp to the stage level through a sectional door at the back of the stage, or by loading directly onto a 3-ft. high dock from a truck with a lift gate. The loading door is 8 feet wide, and vertical clearance is 8 feet.

Secondary loading access is via the stage door entrance at the lower parking lot level with 4 steps up to the stage.

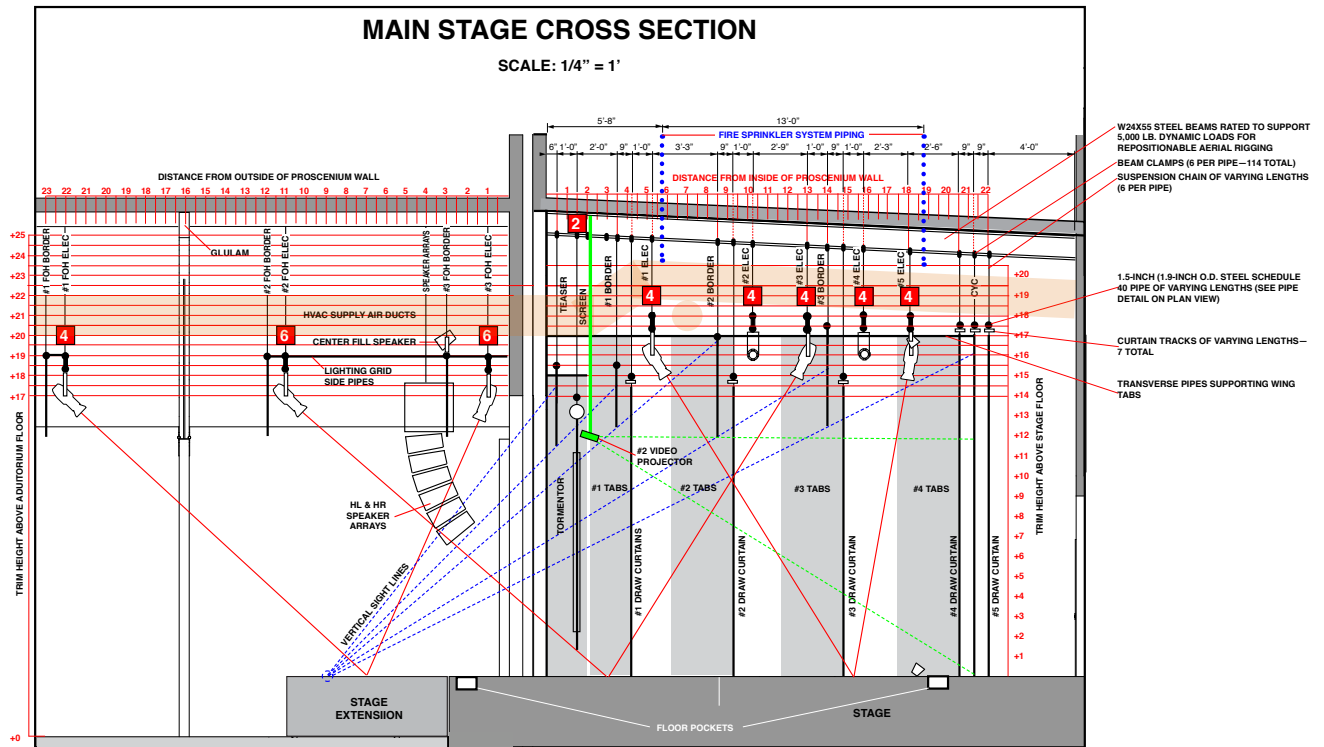
A third option for loading access is via a single door from the upper lot, up two steps to the door and then either up 5 steps to an auxiliary green room, or down 13 steps to the stage and primary green room.

## Grid

All pipe battens, electrics and soft goods are dead hung. Access is via a Genie AWP 24 vertical mast lift for on-stage pipes and a Genie AWP 30 vertical mast lift for FOH pipes.

## Soft Goods

The on-stage soft goods inventory includes five travelers (four of which can be used as leg sets), four borders and a cyclorama. There is no act curtain, although the farthest downstage traveler is only 9 feet from the front of the apron, so it can be used as such. FOH soft goods include three borders, one at each of the electrics.



[Print Main Stage Cross Section as PDF](#)

## Backstage Support

A Green Room at stage level located immediately behind the stage will easily accommodate 12 people and is equipped with one ADA compliant rest room with shower. Additional green room space is available for large performance companies.

## Projection

A 10,000 lumen Barco G60-W10 WUXGA, DLP laser phosphor projector is permanently mounted in the auditorium, utilizing a remote controlled 9'x16' drop down screen located near the front of the stage as a projection surface.

Additionally, we can rent a second projector to be mounted just behind the proscenium that utilizes the cyc as a projection surface.

For more information on using your own projector or if you have any other A/V questions, please contact us.

## Piano

A Steinway D concert grand piano is on site and available for the Center Stage, but carries certain qualifications for its use.

[Print Steinway Piano Rules as PDF](#)

---

## Sound System

### FOH

Allen & Heath dLive S7000 surface  
CDM48 C Class MixRack 48x24 I/O  
6 per side - Meyer LEOPARD Compact Linear Line Array  
loudspeaker  
2 - Meyer 900-LFC subs (flown)  
1 - Meyer Ultra X-40 center fill (flown)  
1 - Meyer 1100-LFC sub (on floor)  
5 - Meyer UP-4XP lip fills & PS-488HP power supply  
1 - Meyer Galileo GALAXY 816 network processor  
1 - Meyer RMS Remote Monitoring Server  
12 - Meyer MJF-210 monitors  
1 - Meyer 750-LFC drum sub

### Monitor Mixer *(upon request for an extra charge)*

Allen & Heath SQ-7  
Behringer X32

### SPL Limits

In all cases in which sound amplification equipment is used,  
the sound pressure level at the mixing board shall not  
exceed 95 dB (C-weighted).

### Audio/Video Playback Options

Denon DN-D4000 Double CD/MP3  
iPod style 1/8" stereo cable input to dLive 7000 mixer for PC/  
Mac or external mp3 player

### Direct Boxes

Countryman Type 85 x 4  
Horizon SL 2 x 4  
Radial Engineering ProAV2 - audio/video passive stereo  
direct box x 1

### Microphones

Audio Technica ATM4041 x 4  
Audio Technica ATM450 x 2  
Audio Technica Pro35 x 6  
Audio Technica ATM250 x 1  
Audio Technica Pro45 x 1 (overhead choir mic)  
Audix D6 x 1  
Audix OM2 x 4  
Audix F12 x 1  
Audix F10 x 3  
Neumann KMS105MT x 2

Shure SM57 x 12  
Shure SM58 x 9  
Shure SM 58S x 1  
Shure KSM137 x 2  
Shure BETA 91A x 1  
Shure BETA 52A x 1  
Shure BETA 58A x 4  
Shure ULXD4Q wireless receiver  
Shure ULXD2 wireless handheld transmitter with BETA 58A capsule x 2  
Shure ULXD1 wireless bodypack transmitter x 1  
Shure TwinPlex TH53T/O-MTQG headset microphone x 1  
Sennheiser MD421 x 2  
Sennheiser E609 x 2  
Sennheiser E935 x 2

#### **Mic Stands**

K&M 21090B full height boom x 10  
K&M 25900B medium height boom x 5  
K&M 25910B low height boom x 1  
Classic round base style (black) x 8

#### **Mic Cables**

A wide variety of various lengths

---

### **Video System**

#### **Recording and Streaming**

3 Canon XA 45 HD 4K camcorders  
3 Sachler tripods  
7 channel wireless Eartech com system  
1 Telestream Wirecast with 4 camera inputs and HD streaming capabilities  
Video files and recording upon request

#### **Monitoring**

Video monitoring (with audio) is available to all of the major areas of The Center, including green rooms.

---

### **Backline Gear**

#### **Amplifiers**

Fender Princeton 650 guitar amp / solid state 1x12 / On board tuner  
Peavy Bandit 112 guitar amp / solid state 1x12 / reverb / 2 channels

Fender Bassman 250 bass guitar amp / solid state 1 x 15  
/ Parametric EQ / FX loop  
Roland KC 60 keyboard amp / solid state 1x10 / sub  
woofer / 3 channels

### **Guitar Stands**

Suitable for both electric & acoustic guitars or basses x 4

### **Music Stands**

Manhasset stands x 6

### **Keyboards**

Roland RS 50 keyboard / power adapter / instrument cable  
Roland RD 170 keyboard / sustain pedal

---

## **Communications**

A ClearCom system supports communication between the tech table, backstage and the house lobby.

---

## **Other Equipment**

Baldwin studio upright piano  
Iron  
Ironing board  
Steamer  
Two 25 lb sandbags  
Six 4' x 8' x 11" platforms are available for use as drum risers

---

## **Laundry**

There are currently no laundry facilities at the venue.

---

## **Crew**

The following non-union crew members can be provided for most events:

Stage Manager  
Lighting technician  
Audio technician  
Video technician  
Stage crew  
Wardrobe  
Security guard  
Make-up artist  
Runner  
Merchandise seller

---