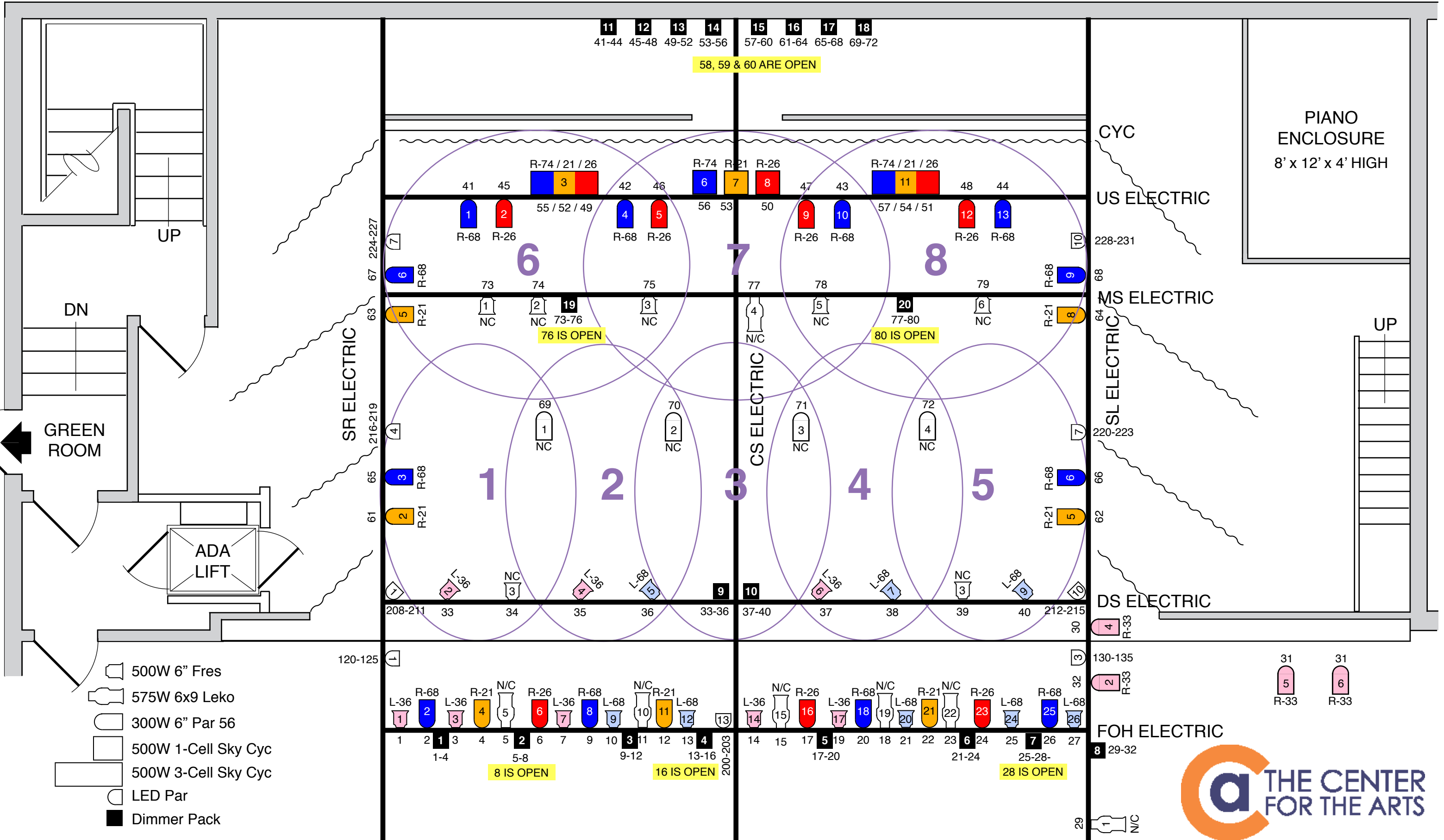


CENTER STAGE STANDARD HOUSE PLOT

REVISED OCTOBER 2016



INSTRUMENT SCHEDULE

Position	Inst #	Type	Lamp	Add	Dim Pack	Color	Function	Position	Inst #	Type	Lamp	Add	Dim Pack	Color	Function
FOH Elec	1	6" Fres	500	1	1	L-36	Area 1 Warm	US Elec	1	8" Par Can	300	41	11	R-68	Blue UR Back
FOH Elec	2	8" Par Can	300	2	1	R-68	Blue Front Wash	US Elec	2	8" Par Can	300	45	11	R-26	Red UR Back
FOH Elec	3	6" Fres	500	3	1	L-36	Area 2 Warm	US Elec	4	3-Cell Sky Cyc	500	55	14	R-74	Blue SR Cyc
FOH Elec	4	8" Par Can	300	4	1	R-21	Amber Front Wash		5		500	52	13	R-21	Amber SR Cyc
FOH Elec	5	6 x 12 Leko	500	5	2	R-33	Special		6		500	49	13	R-26	Red SR Cyc
FOH Elec	6	8" Par Can	300	6	2	R-26	Red Front Wash	US Elec	5	8" Par Can	300	42	11	R-68	Blue URC Back
FOH Elec	7	6" Fres	500	7	2	L-36	Area 3 Warm	US Elec	6	8" Par Can	300	46	11	R-26	Red URC Back
FOH Elec	8	8" Par	300	9	3	R-68	Blue Front Wash	US Elec	7	1-Cell Sky Cyc	500	56	14	R-74	Blue C Cyc
FOH Elec	9	6" Fres	500	10	3	L-68	Area 1 Cool	US Elec	8	1-Cell Sky Cyc	500	53	14	R-21	Amber C Cyc
FOH Elec	10	6 x 12 Leko	500	11	3	R-33	Special	US Elec	9	1-Cell Sky Cyc	500	50	13	R-26	Red C Cyc
FOH Elec	11	8" Par Can	300	12	3	R-21	Amber Front Wash	US Elec	10	8" Par Can	300	47	11	R-26	Red ULC Back
FOH Elec	12	6" Fres	500	13	4	L-68	Area 2 Cool	US Elec	11	8" Par Can	300	43	11	R-68	Blue ULC Back
FOH Elec	13	LED	12	200-204			Multiple Color Wash	US Elec	12	3-Cell Sky Cyc	500	57	15	R-74	Blue SL Cyc
FOH Elec	14	6" Fres	500	14	4	L-36	Area 4 Warm				500	54	14	R-21	Amber SL Cyc
FOH Elec	15	6 x 12 Leko	500	15	4	R-33	Special				500	51	13	R-26	Red SL Cyc
FOH Elec	16	8" Par Can	300	17	5	R-26	Red Front Wash	US Elec	13	8" Par Can	300	48	11	R-26	Red UL Back
FOH Elec	17	6" Fres	500	19	5	L-36	Area 5 Warm	US Elec	14	8" Par Can	300	44	11	R-68	Blue UL Back
FOH Elec	18	8" Par Can	300	20	5	R-68	Blue Front Wash								
FOH Elec	19	6 x 12 Leko	500	18	5	R-33	Special	SR Elec	1	LED	12	120-125			RGBAWU Wash
FOH Elec	20	6" Fres	500	21	6	L-68	Area 3 Cool	SR Elec	2	8" Par Can	300	61	16	R-21	Amber DR Side
FOH Elec	21	8" Par Can	300	22	6	R-21	Amber Front Wash	SR Elec	3	8" Par Can	300	65	17	R-68	Blue DR Side Side
FOH Elec	22	6 x 12 Leko	500	23	6	R-33	Special	SR Elec	4	LED	12	216-219			RGBW Wash
FOH Elec	23	6" Par Can	300	24	6	R-26	Red Front Wash	SR Elec	5	8" Par Can	300	63	16	R-21	Amber UR Side Side
FOH Elec	24	6" Fres	500	25	7	L-68	Area 4 Cool	SR Elec	6	8" Par Can	300	67	17	R-68	Blue UR Side
FOH Elec	25	8" Par Can	300	26	7	R-68	Blue Front Wash	SR Elec	7	LED	12	224-227			RGBW Wash
FOH Elec	26	6" Fres	500	27	7	L-68	Area 5 Cool								
								SL Elec	1	Leko	500	29	8	N/C	Prospector Lounge Sp
DS Elec	1	LED	12	208-211			RGBW Wash	SL Elec	2	8" Par Can	300	32	8	R-33	Stage Extension
DS Elec	2	6" Fres	500	33	9	L-36	Area 6 Warm	SL Elec	3	LED	12	130-135			RGBAWU Wash
DS Elec	3	6" Fres	500	34	9	NC	Special	SL Elec	4	8" Par Can	300	30	8	R-33	Stage Extension
DS Elec	4	6" Fres	500	35	9	L-36	Area 7 Warm	SL Elec	5	8" Par Can	300	62	16	R-21	Amber DL Side
DS Elec	5	6" Fres	500	36	9	L-68	Area 6 Cool	SL Elec	6	8" Par Can	300	66	17	R-68	Blue DL Side Side
DS Elec	6	6" Fres	500	37	10	L-36	Area 8 Warm	SR Elec	7	LED	12	220-223			RGBW Wash
DS Elec	7	6" Fres	500	38	10	L-68	Area 7 Cool	SL Elec	8	8" Par Can	300	64	16	R-21	Amber UL Side Side
DS Elec	8	6" Fres	500	39	10	NC	Special	SL Elec	9	8" Par Can	300	68	17	R-68	Blue UL Side
DS Elec	9	6" Fres	500	40	10	L-68	Area 8 Cool	SR Elec	10	LED	12	228-231			RGBW Wash
DS Elec	10	LED	12	212-215			RGBW Wash								
MS Elec	1	6" Fres	500	73	19	NC	UR Backlight	US Elec							
MS Elec	2	6" Fres	500	74	19	NC	DR Backlight	Ceiling	1	8" Par Can	300	69	18	R-33	SR Silk Downlight
MS Elec	3	6" Fres	500	75	19	NC	DC Backlight	Ceiling	2	8" Par Can	300	70	18	R-33	RC Silk Downlight
MS Elec	4	6 x 12 Leko	500	77	20	NC	C Backlight Pool	Ceiling	3	8" Par Can	300	71	18	R-33	LC Silk Downlight
MS Elec	5	6" Fres	500	78	20	NC	DL Backlight	Ceiling	4	8" Par Can	300	72	18	R-33	SL Silk Downlight
MS Elec	6	6" Fres	500	79	20	NC	UL Backlight	Ceiling	5	8" Par Can	300	31	8	R-33	HR Silk Downlight
MS Elec								Ceiling	6	8" Par Can	300	31	8	R-33	HR Silk Downlight